

Voter



**LEAGUE OF WOMAN VOTERS
GLENDALE/BURBANK**

July 2009

The LEAGUE OF WOMEN VOTERS is where hands-on work to safeguard democracy leads to civic improvement.

Message from *Joan Hardie*

As your new co-president, I'd like to invite you all to our Summer Social. This year we have decided on a pot-luck picnic at Pacific Park. There will be a performance of a Shakespeare play, "As You Like It." Prior to the performance we will eat together and listen to speaker **Colin Bogart** from the Los Angeles County Bicycle Coalition tell us about the Pedestrian/Bicycle Enhancement Projects going on in Glendale. It should be a nice way to spend a summer evening and Chris and I hope you all can make it.

When I first joined the League five years ago, I was a relatively new resident in Glendale and I wanted to get involved in my community. I realized that I did not know much about the community where I owned a home and I was dismayed with the way politics in general were going in the country. I felt that the League of Women Voters was the place to get good nonpartisan information and learn about my city. Little did I know what hands on education and democracy building experience I would have by getting involved with the League of Women Voters.

After being in the League for several years, I became a board member and became an active member where I was a part of many wonderful opportunities. Just to name a few, I was involved in a study on campaign finance in Glendale, which ended successfully in the City of Glendale passing an ordinance on campaign finance reform. I have been involved in voter services and helped organize voter registration opportunities. Also with voter services I have become familiar with all the ways we aid voters to prepare for Election Day such as candidate forums, pro con presentations, Smart Voter website (SmartVoter.org), and the Easy Voter guide. I have also been to several state conventions where my indoctrination into the League has deepened my appreciation and belief in the League's overall mission. Most of all, the most rewarding part of being in the League, is the people I have met and gotten to know. Not only are fellow league members interesting and fun, they are also passionate and caring and my life is the better for it.

As Co-President with **Chris Carson**, I look forward to learning even more about the League while also leading the league to continue to make a difference. I for one will miss having **Monica Marquez** as our president. She was not only wonderful but comforting, and did I mention capable? Her shoes are tough to fill. Chris and I will continue to focus on membership growth as well as our recommended program items. There will be a lot of opportunity for involvement with upcoming forums and speaker bureau engagements. We look forward to working with our members to make these events a success.

CALENDAR

**Thursday
August 6, 2009**

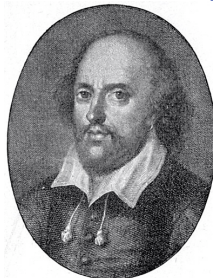
Potluck, Shakespeare and an update on biking improvements in Glendale--all FREE and in a lovely park setting.

Meet at 5 pm

**Pacific Park
501 S Pacific Avenue
Glendale**

**7 pm
Performance of
As You Like It**

**See page 3
for details**



**Saturday, July 25
Popovers in Pasadena
9:30 am**

See page 2 for details

<http://www.lwvglendaleburbank.org>



LEAGUE OF WOMEN VOTERS OF LOS ANGELES COUNTY

An Inter-League Organization ▫ Beach Cities • Claremont Area • East San Gabriel Valley • Glendale/Burbank • Long Beach Area
Los Angeles • Palos Verdes Peninsula • Pasadena Area • Santa Monica • Torrance • Whittier

2009 ANNUAL SUMMER LEAGUE DAY POPOVERS IN PASADENA

WOMEN'S CITY CLUB
160 NORTH OAKLAND, PASADENA
 Parking in rear off N. Madison Avenue,
 1-1/2 blocks north of Colorado Blvd.

SATURDAY, JULY 25, 2009
9:30 AM TO 2 PM
SALAD LUNCHEON

WORKSHOPS
 Presidents
 Education
 Redistricting
 Natural Resources



LOS ANGELES COUNTY
SHERIFF LEE BACA

✂-----

Please send form and check payable to **LWV/LAC**
 Mail to **LWV/LAC Treasurer, 427 E. Walnut Ave., Burbank 91501**

League Name _____

Attendee Name(s) _____

Deadline is July 13, 2008

Reservations # _____ @\$25.00 Total enclosed \$ _____

If postmarked after July 13th

Reservations # _____ @\$30.00 Total enclosed \$ _____

Chicken Salad Luncheon # _____ Vegetarian Luncheon # _____ W/O NUTS or other allergens # _____
 (name food)

PLEASE SIGN UP FOR A MORNING WORKSHOP

Presidents # _____ Education # _____ Redistricting # _____ Nat. Resources # _____



THE LEAGUE OF WOMEN VOTERS
GLENDALE/BUBANK

INVITES YOU TO A SPECIAL NIGHT

Thursday
August 6, 2009

5 pm
CASUAL POTLUCK

On the lawn at
Pacific Park
501 S. Pacific Ave.
Glendale

7 pm
Enjoy a FREE
performance of
Shakespeare's
AS YOU LIKE IT



Join us for casual fun as we sit together for the FREE performance.

Bring a dish to share, your drink and a folding chair.

Our guest will be **COLIN BOGART** from the **LA BICYCLE COALITION**.

REPORT FROM THE CALIFORNIA CONSTITUTIONAL CONVENTION SUMMIT

by **Monica Marquez**

Back in April I attended a program sponsored by the United Chambers of Commerce San Fernando Valley & Region. The issues discussed then are ever more pressing today. The program was entitled the California Constitutional Convention Summit. A variety of speakers addressed whether it is time for California to convene a convention to amend its Constitution.

Overall, the speakers painted a bleak picture of California's present and future.

Overall, the speakers painted a bleak picture of California's present and future.

Jim Wunderman, president and CEO of the Bay-Area Council, a business-backed public policy organization in the San Francisco-Oakland-Silicon Valley Bay area, started the conversation with a talk on why a constitutional convention is an idea worth considering.

The Current Situation

Wunderman addressed our current fiscal situation. There is a downward trend, with no good end in sight.

But beyond the budget is California's educational system. An educated workforce is needed to make business successful. Two generations ago, California's education system was revered. Now it's among the worst systems in the country. The same with the transportation system. In the 1950s, California was a model. There were the freeways in southern California, and BART in the Bay area. Today, we have the worst congestion in the entire country in Los Angeles. Our water system is in trouble. The water system was built for 20 million people. No additional capacity has been built. The snowpack is melting and the ecology of the delta is failing. Our prisons are overflowing. It's in the hands of a federal judge. There is the potential for the release of thousands of prisoners due to budget cuts.

Wunderman concluded that given the difficulties the state is facing, we have to look for big change.

Considerations for Amending the Constitution

Wunderman continued with an overview of our current constitution and what a Constitutional Convention might accomplish. Our current constitution was adopted in 1879, and has been amended 500 times. It's a mish mash.

There are two means of calling a constitutional convention. The legislature can do it with a 2/3 vote. For the people to call a convention, they'd have to amend the constitution. Another amendment would be needed to dictate the terms.

Here are some items that might be considered:

Budget—keep the 2/3 majority currently needed to pass a budget?

- Redistricting—In the works with the passage of Proposition 11
- Term Limits—In Wunderman's opinion, they don't work—too many rookies in the legislature, too dependant upon lobbyists
- Management Oversight of the legislature.

Wunderman concluded by asking if we can afford the status quo.

Michael Cohen, Deputy, Legislative Analyst's Office, gave the next presentation. He laid out the 5 biggest challenges in the budget process.

- Failure to save for a rainy day
- The volatility of the state's revenue structure.
 - Personal income tax is 40% of revenue. All the egg are in one basket—the extremely wealthy. But their wealth goes up and down, making budgeting very difficult
- The government has solved ongoing problems with one time solutions
 - One time solutions put pressure on future years, e.g. collective bargaining agreements that give raises in the future
- Ballot measures complicate budgeting.
 - Dictates tax revenue to specific purposes, eg., cigarette tax, mental health.
- Statutory drivers that make the budget seem non-discretionary
 - E.g. entitlement programs like the state's retirement systems. The state bears the risk of cost increases. It relies on the stock market, but when the market crashes, the state will still face payment of revenue for pensions

After those sobering presentations, the focus turned toward how to fix it.

Summit continued on page 7

The League of Women Voters of Glendale/Burbank sponsored Connie for the award, because she has been the backbone of the League of Women Voters of Glendale/Burbank's Voter Service activities in Burbank since the 1970s.

CONNIE WILSON HONORED

IN APRIL, longtime Glendale/Burbank League member Connie Wilson received an Older Americans Volunteer Service Award sponsored by the Joslyn Center of the City of Burbank. She was honored with a beautiful Certificate of Appreciation from the City of Burbank.

The League of Women Voters of Glendale/Burbank sponsored Connie for the award, because she has been the backbone of the League of Women Voters of Glendale/Burbank's Voter Service activities in Burbank since the 1970s.

Connie has a long and distinguished record of public service to the City of Burbank. For 14 years, she has been the Burbank Voter Service Chair for the League of Women Voters of Glendale/Burbank.

Connie's main activities as Voter Service Chair for Burbank include the organization of Candidates' Forums and voter registration activities. She has been coordinating Candidates' Forums every year since 1999.

A Candidates Forum is the presentation of all the candidates for a particular local office to the public. For every election cycle in Burbank, the League of Women Voters of Glendale/Burbank presents a Candidates' Forum. Most recently, In October, 2008, The League presented a Candidates' Forum for US Congress. Then, in January, 2009, the League presented a Candidates' forum for Burbank City Council and Burbank School Board. There were 11 candidates present for City Council, and all three of the School Board candidates came to the Forum.

Presenting a Candidates' Forum takes an enormous amount of time and resources, and Connie has been the backbone of our organization in that regard.

Connie's service to the League doesn't end with the Candidates' Forums. She is also the main coordinator of the League's voter registration campaigns. With her many contacts, she is responsible for voter registration drives at St. Joseph's Hospital and Urgent Care and Warner Bros.



Connie Wilson was honored by the City of Burbank month. A volunteer extraordinaire, Connie was sponsored by the League of Women Voters of Glendale/Burbank. Chris Carson, Monica Marquez, Connie and Mike Chapman.

Studio. She coordinates with the business to determine which days to hold the registrations, and then organizes our League volunteers to do the voter registration.

She is the Director of Voter Service Educational Programs for the League of Women Voters of Glendale/Burbank.

Connie was appointed by the Burbank City Council to the Board of Trustees for the Burbank Public Library. As a member, she also serves with the Friends of the Burbank Public Libraries.

She is a member of the Retired Public Employees' Association of California. She attends monthly meetings and has arranged speakers in the past.

She is on the La Providencia Guild. She has donated many hours at their local thrift shop and is presently serving as a Patroness.

She serves on the State Professional Standards Program as an advisor. (This program is endorsed by the Chancellor's Universities, Community Colleges, State Administrators, State School Board and State Business Officials.)

She is active in her local Starlight Hills Committee.

She is a committee member of the Community Voter Outreach Committee of the Los Angeles County Registrar Recorder-County Clerk.

She is an advisor for the Professional Incentive Program endorsed by Chancellors, State Universities and State Community Colleges, Association of School Administrators, State Association of School Office, in conjunction with the California Association of Educational Office Professionals.

She is a registered Meeting Planner by the International Society of Meeting Planners (involves site inspections of various hotels).

Congratulations to Connie for this wonderful achievement!



Ovsanna Khachikian, Monica Marquez, Angela Baghumian

LWV GLENDALE/BURBANK AWARDS SCHOLARSHIPS TO GLENDALE COMMUNITY COLLEGE STUDENTS

LAST YEAR, the League came up with the idea of using some of our budget to award scholarships to students of Glendale Community College. The idea is to deepen our roots within the student community, and to reward excellence. With the assistance of our member Dr. Armine Hacopian, Chris Carson and I met with the President of GCC to propose the program.

Our proposal was well received. We proposed to offer two scholarships, each in the amount of \$250 to GCC students who demonstrated academic achievement and community service. With each scholarship would come a 1 year student membership in the League of Women Voters of Glendale/Burbank. The scholarship will be renewable for one year if the recipient keeps up his or her grade point average and attends 2 League activities.

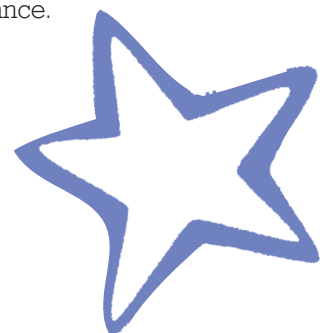
We formed a committee from our membership, consisting of City Council Member Ara Najarian, Joylene Wagner, GUSD Board of Education Member, Laurie Collins, Chris Carson and myself to make the selections. It was a difficult task.

Our first recipient is Ms. Angela Baghumian. A graduate of Glendale High School, Angela is a member of Alpha Gamma Sigma, the Honor Society at GCC. Through AGS, she volunteered and participated in many community activities. She has helped raise money and sell books. She has been a member of the Sociology Club, which helped her gain more knowledge about the social issues of today. She works on campus at the Job Placement Center.

She has volunteered at Adventist Hospital for one year and also volunteered at R.D. White Elementary School. She was part of the Glendale City Elections in 2007. She got out in the community and encouraged people to participate in voting.

Our second recipient is Ms. Ovsanna Khachikian. A graduate of Clark Magnet High with a GPA of over 4.0, Ovsanna serves as the President and Student Trustee of the Associated Students of Glendale Community College. As president, she held the responsibility of leading a 25 member legislature to delivering the mission of student government. One of the greatest challenges is helping the student officers develop into strong student leaders. As student trustee, she advocates on behalf of 15,000 students.

In the fall and spring, she participated in the STAR program, encouraging a classroom of high school students to develop tolerance for others. She has done over 250 hours of community service, volunteering for places ranging from Mark Keppel Elementary to the Friends of Greg Krikorian campaign for City Council to the St. Kevork Armenian Apostolic Church to cleaning community parks with the Glendale Youth Alliance.



Summit continued from page 4

Robert Stern, President, Center for Governmental Studies, offered an overview of the constitutional convention process. The last constitutional convention was in 1879, when California's population was 865,000. There were 152 delegates—no women, no non-whites. The changes were ratified in May 1879 54% - 46%. Since then, there have been more than 500 amendments.

Stern's conclusion was that the constitution needs to be changed. There should be fewer initiatives, better drafted, and the voters must be given more information.

Joel Fox, President, Small Business Action Committee, warned of the dangers of a constitutional convention. He stated that a constitutional convention is not going to be able to escape politics. He was concerned about using a 19th century process to solve a 21st century problem. There would be difficulties picking delegates. If delegates were voted in, politics would come into play. Other options would be to use a selection process, like in the recently enacted Proposition 11 for Redistricting.

After the speakers, there was group discussion on whether a constitutional convention would be a good idea. A number of audience members came to the microphone and gave their opinions. Overall, my sense of the group is that they were not in favor of a constitutional convention.

I suspect, however, that this is not the last we'll be hearing about it. I enjoyed the program. It was a very stimulating and provocative, if a little distressing, and I was pleased to be able to attend.

2009-2011 OFFICERS

We would like to congratulate our newly
elected slate of
Officers and Directors 2009-2011



OFFICERS:

CO-PRESIDENTS: Chris Carson and Joan Hardie

FIRST VICE PRESIDENT: Gwen Chochran

SECRETARY: Mary Dickson

DIRECTORS:

**2009-2011: Laurie Collins and
Dionisia Rodriguez**

2009-2010: Georganne Thompsen

NOMINATING COMMITTEE: Monica Marquez

**The incoming President and Board may appoint
5 more people for one year terms on the Board.**

**The new Board appoints two of its members to
the 2006-2007 Nominating Committee.**



Membership Application

It is easy to join the League of Women Voters of Glendale/Burbank. All Citizens of voting age are welcome.
Associate Membership is open to all others.

YES! I want to add my voice to yours by joining the League of Women Voters as part of your voice for citizens and force for change. I enclose: (please check one or more of the following)

\$60.00 for a one-year individual membership
(includes a copy of our VOTER, nine times per year)

\$100.00 for a one-year household membership for two
members who share the same address
(includes a copy of our VOTER, nine times per year)

\$30.00 for a one-year student membership

Name _____

Address _____

City, State, Zip _____

Telephone _____

I would like to receive my VOTER by email.

My email address is _____

Make check payable to League of Women Voters. Mail to
Vera Naylor, 7714 Via Capri, Burbank CA 91504

am unable to join the League at this time, but enclose a contribution of \$ _____

Gifts made payable to the "LWV Education Fund are tax deductible.

Voter

The VOTER is published nine times a year by the League of Women Voters of Glendale/Burbank, California

Co-PRESIDENTS: Chris Carson and Joan Hardie
EDITOR: Monica Marquez
PRODUCTION: Carole Dougherty
CIRCULATION: Anna Rundle

The League of Women Voters, a nonpartisan political organization, encourages informed and active participation in government, works to increase understanding of major public policy issues, and influences public policy through education advocacy.

The League never supports or opposes any political party or candidate. We advocate only on issues that members have studied and come to a consensus on. In an era of proliferating and powerful special interests, the League's advocacy in the public interest is increasingly recognized as an essential voice of democracy.



Correction:

In our last issue, we announced the passing of **Ruth Priest**. Fortunately, our announcement was incorrect. We regret the error.

249 N. Brand Blvd.
Glendale, CA 91203
Corner of Brand/Calif.
tel: 818.244.4448
fax: 818.244.4795
M-F 8:30-6, Sat. 10-4
1125 E. Broadway
Glendale, CA 91205
Btwn Chevy Chase/Adams
tel: 818.242.4270
fax: 818.242.0525
M-F 8:30-6:30
Sat. 10-4, Sun. 12-4



MAIL BOXES ETC.
A UPS® Company

Laurel Pavone
Notary Public

MBE centers are independently owned and operated franchises.

CATHY SELLITTO
NOTARY PUBLIC
Mobile Service
Business Hospitals Residence
(818) 502-0661

LEAGUE OF WOMAN VOTERS GLENDALE/BURBANK

7714 Via Capri
Burbank CA 91504
818 247-2407

League websites:
LWV Glendale/Burbank
<http://www.lwvglendaleburbank.org>

LWV California
<http://www.ca.LWV.org>

LWV United States
<http://www.LWV.org>

Printed courtesy of MAIL BOXES ETC